



Province of the  
**EASTERN CAPE**  
EDUCATION

**NATIONAL  
SENIOR CERTIFICATE**

**GRADE 11**

**NOVEMBER 2018**

**MATHEMATICAL LITERACY P2  
ADDENDUM**



---

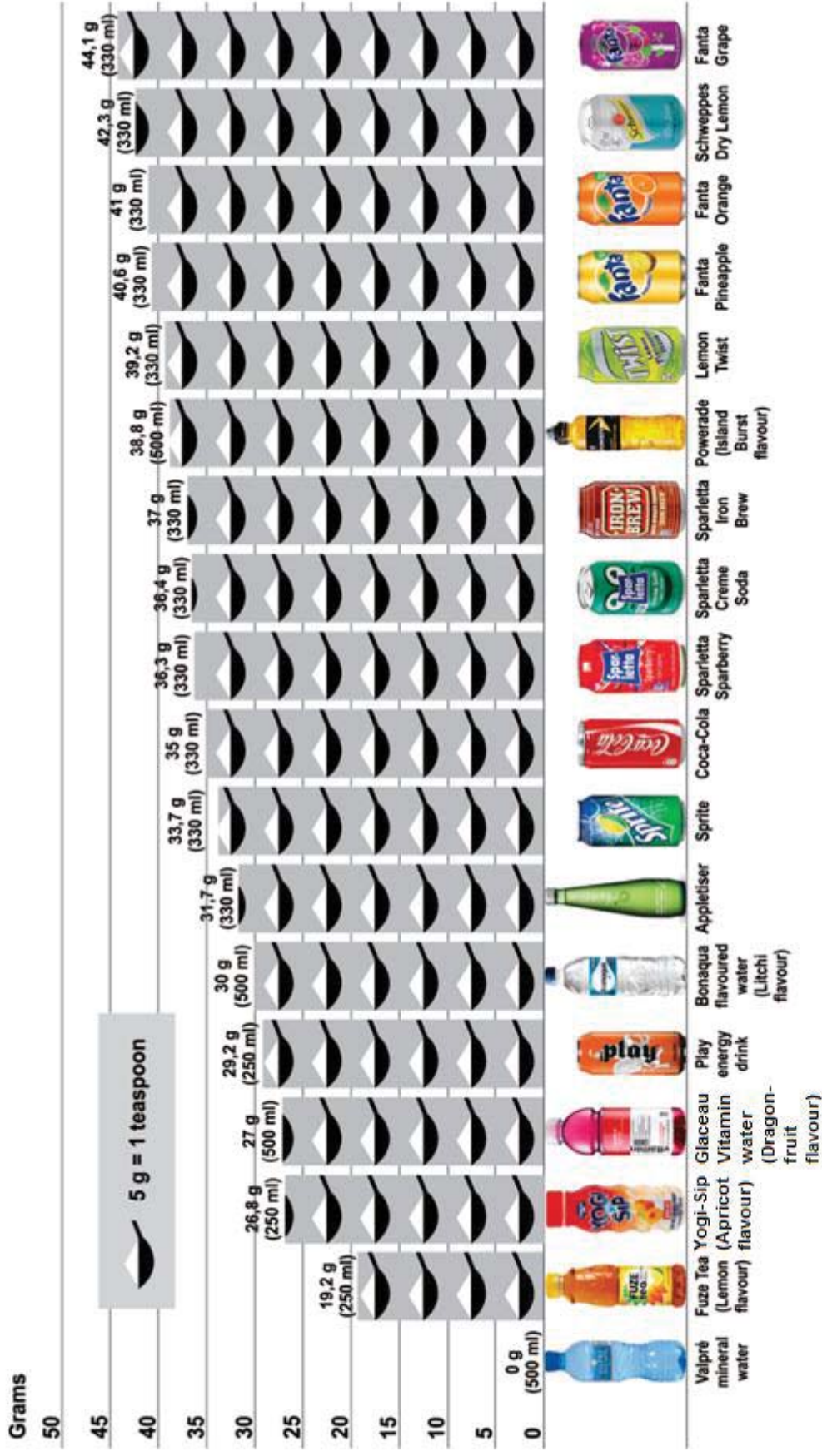
This addendum consists of 4 pages with a 3-page of annexures

---

ANNEXURE A

QUESTION 2.2

We gathered a few popular drinks from our canteen's refrigerator to check how much sugar each one contains. The results were surprising. Even 'healthier' drinks, such as flavoured mineral water and drinking yoghurt, contain a large amount of sugar.



ANNEXURE B

QUESTION 3

										Pretoria
										1120
									Port Elizabeth	1120
									Polokwane	1393
									273	
									Nelspruit	320
									1373	342
									Mafikeng	589
									565	1122
									292	
									Kimberley	360
									832	805
									752	532
									Johannesburg	467
									273	358
									331	1062
									58	
									East London	992
									750	1029
									1214	1323
									300	1050
									Durban	667
									598	842
									859	689
									929	927
									656	
									Cape Town	1660
									1042	1402
									960	1320
									1779	1736
									756	1463
									Bloemfontein	998
									667	575
									417	175
									427	771
									748	635
									475	

## ANNEXURE C

## QUESTION 4.2

