



## TOM NEWBY SCHOOL EXAMINATION



Subject	HISTORY	Examiner	MS C PRINSLOO
Date	9 JUNE 2016	Total marks	50
Session	2	Duration	1 HOUR
Grade	4	Moderator	MS ALBERTYN
Special instructions/ Equipment			

This Exam has been compiled using notes and information contained in the Tom Newby School book. The marking memorandum has been compiled accordingly. While alternative responses will be given due acknowledgement, the official memorandum will be considered a priority document to ensure uniformity of marking. Up to 10% of the total mark allocation may be deducted for spelling and grammatical errors, except in the case of Language papers, where deductions are made according to a memorandum.

Name: \_\_\_\_\_ Grade 5: \_\_\_\_\_

### Instructions:

1. Read each question carefully and follow the instructions.
2. Good Luck!!

### Question 1:

Match the letter from column A with the correct number from column B. Write only the number in the block below.

Column A:	Column B:								
A. Sources	1. A place where things that important to history, art or science are on display for the public.								
B. Archeologists	2. An example of a written source.								
C. Museum	3. People who use objects or artifacts to learn about the past.								
D. Past	4. A city or town.								
E. Newspaper	5. The area a person lives in.								
	6. Help us answer questions about the present or the past.								
	7. Something that has already happened. (history).								
A	7	B	3	C	1	D	7	E	2

(5)

**Question 2:**

(5)

Answer the following short questions.

1. What are the things displayed in a museum called?

Artefact

(1)

2. Give 1 example of something that could be found on display in a museum?

old pictures, wagons, books, bones, fossils

(1)

3. Define "local area":

An area a person lives in

(1)

4. What is your local area?

Benoni

(1)

5. Benoni has many lakes and shopping malls such as Lakeside mall. Lakeside mall is built in the shape of a:

Mississippi Steamboat

(1)

**Question 3:**

(10)

Fill in the empty spaces of the paragraph from the word box below.

<b>Qualities</b>	<b>Leader</b>	<b>Serve</b>
<b>Albert Einstein</b>	<b>Trustworthy</b>	<b>1918</b>
<b>Democracy</b>	<b>1994</b>	<b>Apartheid</b>
<b>Others</b>		

A leader is someone who people follow or who takes charge and gives direction to others. It is important for leaders to serve the people and work for the good of others. These are qualities of a good leader. An example of a Scientific leader is

Albert Einstein. Nelson Mandela was a great leader in South Africa, he was extremely Trustworthy. Nelson Mandela was born in 1918. He fought against the

apartheid system which treated some races as not being equal to others. Nelson Mandela was elected president in

1994, and South Africa became a

Democracy.

**Question 4:**

(5)

Answer the short questions.

**Nelson Mandela:**

1. What is the name of the political party Nelson Mandela belonged to?

Anc

(1)

2. Nelson Mandela was sentenced to life in prison in 1964. What was the name of the trial?

The Rivonia trial

(1)

3. Where did Nelson Mandela serve his prison sentence?

At Robben Island

(1)

4. What was Nelson Mandela's traditional name?

Rolihlahla

(1)

5. How long was Nelson Mandela in jail?

27 years

(1)

**Question 5:**

(6)

Answer the short questions:

**Mahatma Gandhi:**

1. What was Gandhi's first name?

Mohandas

(1)

2. What did Gandhi study to become?

A lawyer

(1)

3. Gandhi's ideas that directed his protests were peaceful but firm. What were these ideas called?

"Satyagraha"

(1)

4. What did Gandhi fight for in India?

for independence and freedom from British rule

(1)

5. What does "Mahatma" mean?

"Great Soul"

(1)

6. What did Mandela and Gandhi fight against in South Africa?

Against the apartheid. (1)

**Question 6:**

**True or False**

**(6)**

Read the following statements and say whether they are true or false.

1. Nelson Mandela was chief of Maveso

False (1)

2. Nelson Mandela was friends with Walter Sisulu

True (1)

3. Nelson Mandela's cell number was 1501

False (1)

4. Gandhi was a violent protestor

False (1)

5. Gandhi came to South Africa to open a law office

False (1)

6. Gandhi was assassinated because of his beliefs of fairness and tolerance

True (1)

**Question 7:**

**Sources**

**(3)**

Study the following sources and answer the questions that follow:

Read the extract and answer the questions that follow:

Soon after Gandhi arrived in South Africa in 1893, he attempted to board a train. He had bought a first class ticket but was told to go to the van compartment of the train, which was third class. Gandhi was angry and argued that he had a right to sit there and he would not go. He peacefully told the conductor that what was happening was wrong. He left the train to show he did not agree with them. Gandhi was very angry and this event led to his protest and fight for fairness.

1. Why was Gandhi kicked out of the first class section on the train?

because he was a non white. (1)

2. How did he respond to the people who tried to kick him out of first class?

He told the conductor what is happening is wrong (1)

3. Where did they want him to sit?

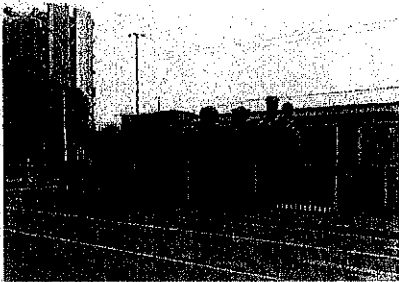
To sit at the Van Compartment of the train (1)

**Question 8:**

(5)

Look at the following pictures and label them on the lines below:

**Local area**



Benoni Museum (1)



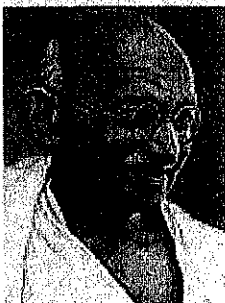
Lately received a lot of negative publicity, because of the health of the animals.

Bunny park (1)



Lakeside Mall (1)

**3. Great leaders: Who are we?**



Mahatma Gandhi (1)



Nelson Mandela (1)

**Question 7:**

(5)

1. Do you think Gandhi was a good leader? Why/Why not?

Yes Gandhi was a great leader. He showed good leadership qualities and helped India to fight against the British rule.

(2)

2. Explain the term "Democracy."

A political system where all adults are allowed to vote regardless of their race, gender, culture and religion.

(2)

3. What is the term for: 'treating people differently because of their race, gender, religion, culture, language or country?'

Discrimination.

(1)

**Remember to check your answers.**

**Good luck!!!**

