



# MEMO



## TOM NEWBY SCHOOL EXAMINATION

### Memo

Subject	GEOGRAPHY	Examiner	Mr J Maredi
Date	MONDAY: 13 JUNE 2016	Total marks	50
Session	2	Duration	1 Hour
Grade	5	Moderator	Miss M Albertyn
Special instructions/ Equipment			

This Exam has been compiled using notes and information contained in the Tom Newby School book. The marking memorandum has been compiled accordingly. While alternative responses will be given due acknowledgement, the official memorandum will be considered a priority document to ensure uniformity of marking. Up to 10% of the total mark allocation may be deducted for spelling and grammatical errors, except in the case of Language papers, where deductions are made according to a memorandum. Time allocation on this examination includes provision for concession.

Name: \_\_\_\_\_

Grade 5: \_\_\_\_\_

### QUESTION 1

Say whether the following statements are true or false. If false, then correct the statement:

1.1 South Africa has 9 neighbouring countries.

False, six

1.2 The Equator is the imaginary line that divides the earth into two parts.

True

1.3 Brazil is in Europe.

False, South America

1.4 The bottom of the earth is called the North Pole.

False, South Pole

1.5 Asia is the biggest continent in the world.

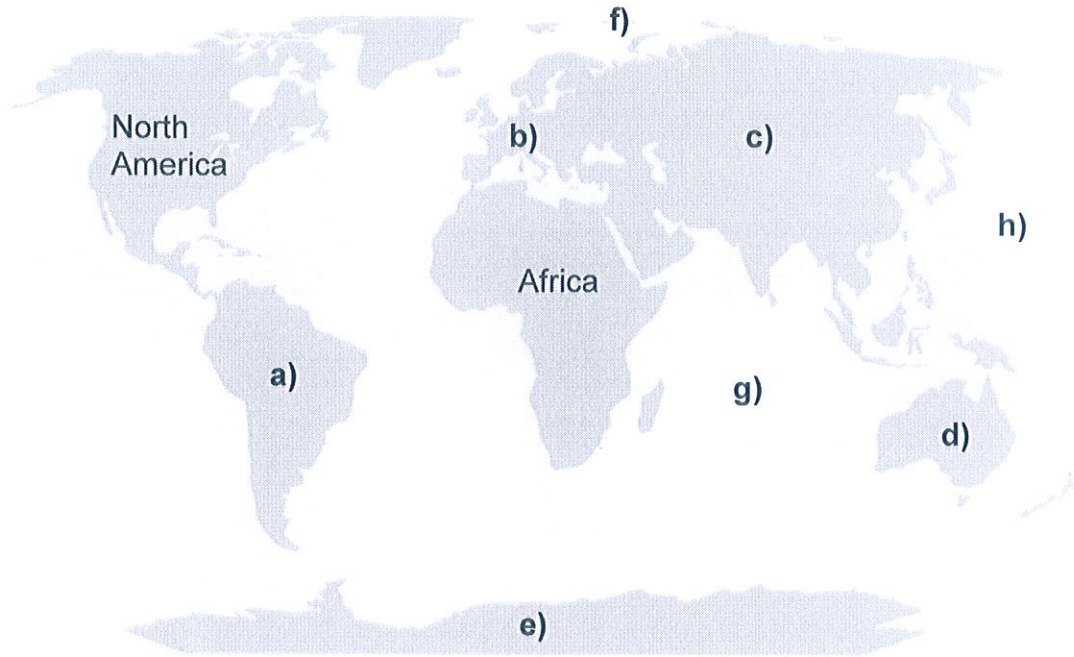
True

1.6 Landlocked countries are ~~surrounded~~ <sup>next to the ocean.</sup> by land.

True. False. Surrounded by land/Inland

## QUESTION 2

2.1 Look at the map of the continents and fill in the missing continents and oceans.



- a) South America
- b) Europe
- c) Asia
- d) Australia/Oceania
- e) Antarctica
- f) Arctic Ocean
- g) Indian Ocean
- h) Pacific Ocean

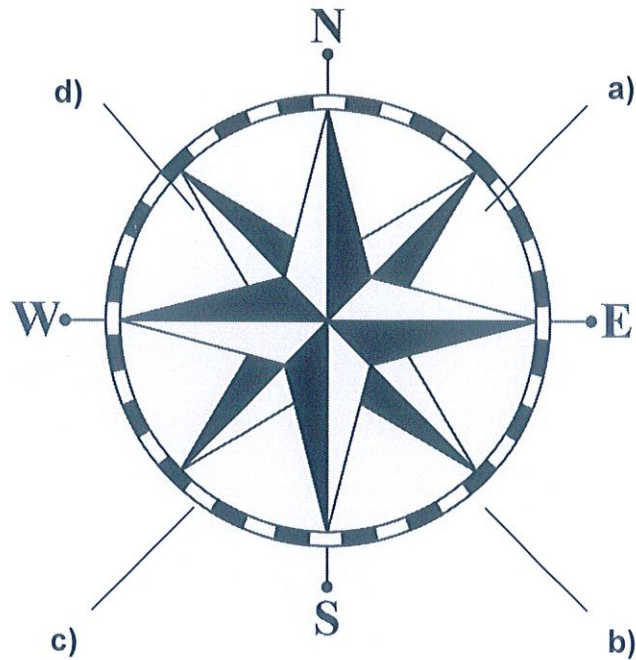
2.2 Colour in the continent where you live.

2.3 Place a dot in the correct place to show which country you live in.

**(10)**

### QUESTION 3

3.1 Fill in the missing points from the compass.



- a) North-East
- b) South-East
- c) South-West
- d) North-West

(4)

### QUESTION 4

Define the following terms:

- 4.1 Plateau  
Is a large, flat area high above the sea level.
- 4.2 Coastal plain  
Is a flat or sloping area of land that is between the sea on the one side  
is a mountain.
- 4.3 Escarpment  
Is a steep mountain that is found between low lying land and high lying  
land.



(3)

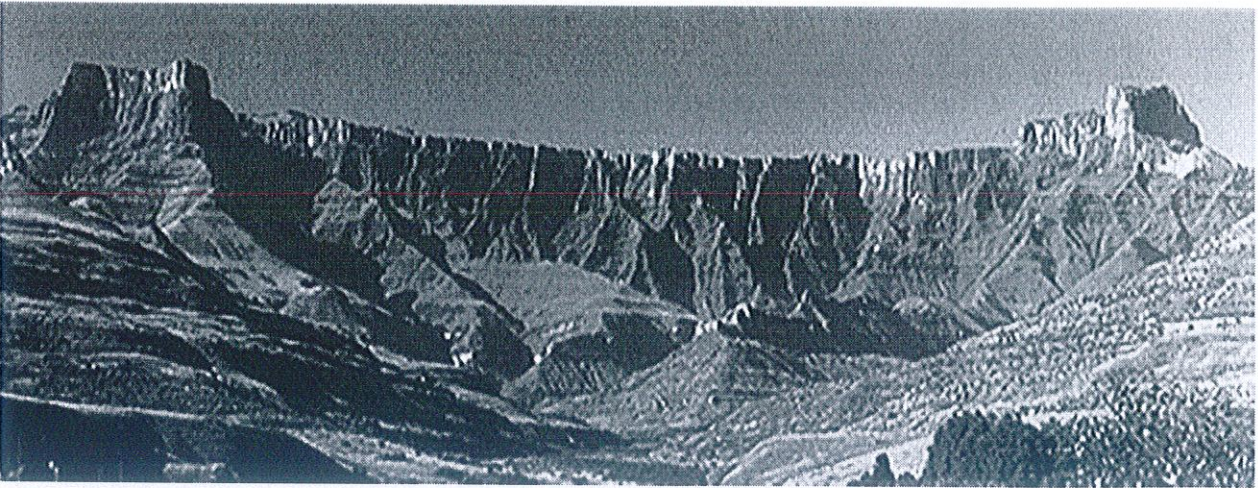
**QUESTION 5**

Match the physical features in Column A with the correct location in Column B

Column A		Column B
5.1	Highveld	a. The smaller of the two valleys in the Western Cape that are found between mountain ranges.
5.2	Namaqualand	b. High lying in the centre of South Africa.
5.3	Little Karoo	c. Found on the eastern part of South Africa, about 800m above sea level.
5.4	Lowveld	d. The name of a desert.
5.5	Kalahari	e. A large valley found between the Swartberg and Nuweveldberg mountains.
5.6	Great Karoo	f. Found along the west coast next to the cold Atlantic ocean.

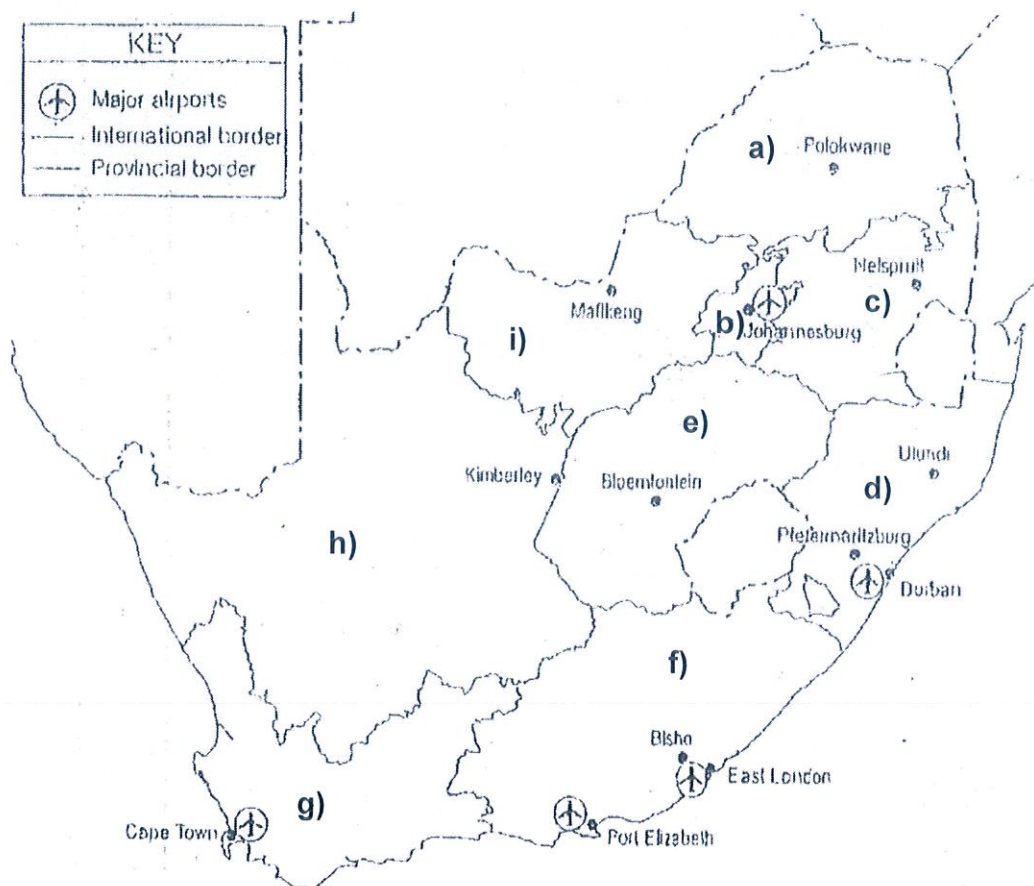
5.1	5.2	5.3	5.4	5.5	5.6
B.	F.	A.	C.	D.	E.

(6)



## QUESTION 6

Study the map below and answer the questions that follow:



6.1 Fill in, on the lines below, the name of each province:

- a) Limpopo
- b) Gauteng



- c) Mpumalanga
- d) Kwazulu Natal
- e) Free State
- f) Eastern Cape
- g) Western Cape
- h) Northern Cape
- i) North West

(9)

- 6.2 Name two neighbouring countries that lie within South Africa's borders:  
Swaziland and Lesotho (2)
- 6.3 Name one of South Africa's neighbouring countries that lies east of Limpopo:  
Mozambique (1)
- 6.4 If I travel from Cape Town to Polokwane, direction will I travel in?  
North East (1)
- 6.5 If I travel in a straight line from Port Elizabeth to Bloemfontein, how many provincial borders will I cross?  
One Border (1)
- 6.6 How many major airports are there in South Africa, according to this map?  
Five major airports (1)

**[15]****QUESTION 7****Paragraph**

Write a paragraph, naming 6 important rivers or waterfalls in Africa.  
Include one interesting fact you have learnt about each river or waterfall.

---



---

---

---

---

---

---

---

---

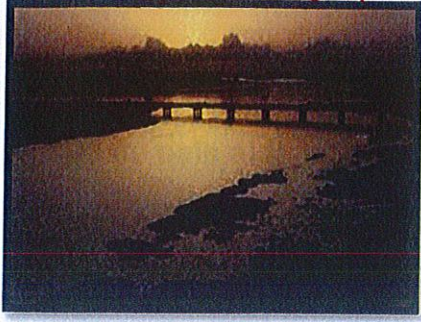
[6]

---

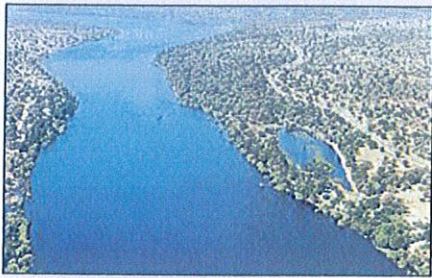
**GRAND TOTAL: 50 MARKS**



QUESTION 7



The Niger River flows through 6 countries. It is 4180 km long and ends in the Atlantic Ocean.

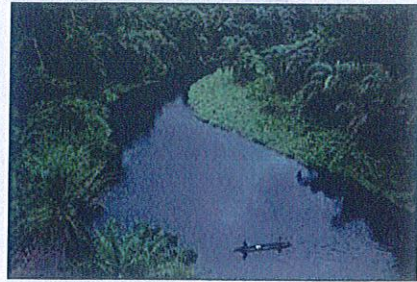


The Congo river flows through 10 countries. It is 4700 km long and ends in the Atlantic Ocean.

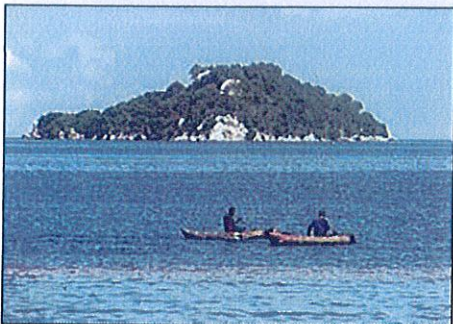
MEMO



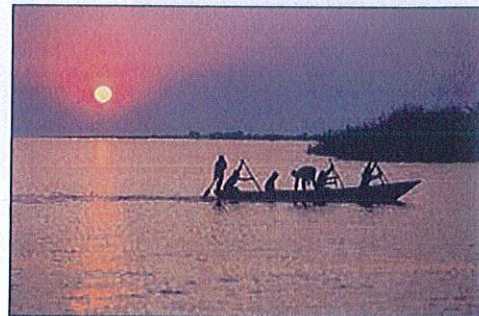
The Nile River flows through 10 countries. It is 6650 km long and ends in the Mediterranean Sea.



The Zambezi river flows through 9 countries. It is 2574 km long and ends in the Indian Ocean.



Lake Malawi is found in the countries of Tanzania, Malawi and Mozambique. It is 706m deep.

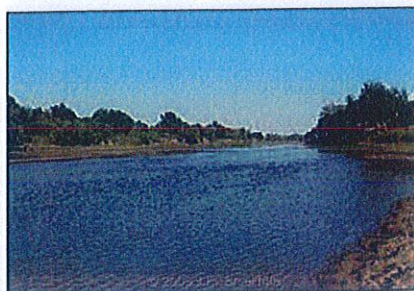


Lake Tanganyika is found in the countries of Burundi, Tanzania, Zambia and DRC. It is 1470m deep.

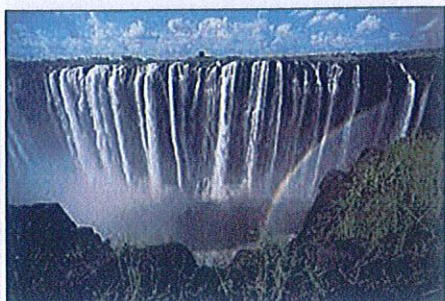




The Gariep/Orange River flows through 3 countries. It is 2200 km long and ends in the Atlantic Ocean.



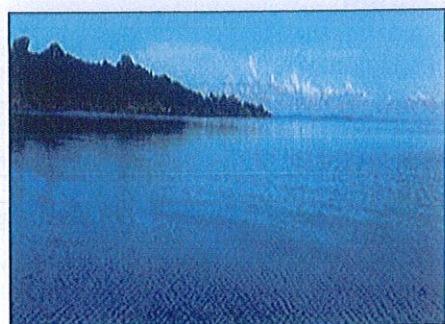
The Limpopo river flows through 6 countries. It is 1750 km long and ends in the Indian Ocean.



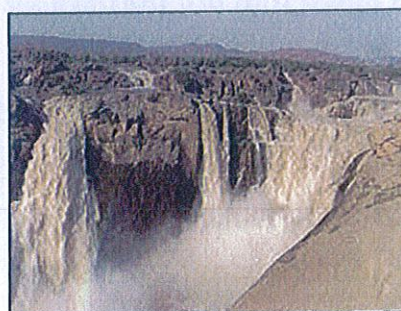
The Victoria Falls is found on the Zambezi River between Zambia and Zimbabwe. The falls are 108m high. The local name for Victoria falls is 'the smoke that thunders.'



The Maletsunyane Falls is found in Lesotho on a tributary of the Orange/Gariep River. The falls are 192m high. The local name for the falls is 'place of smoke.'



Lake Victoria is found in the countries of Tanzania, Uganda and Kenya. It is 83m deep.



The Augrabies falls are found in South Africa on the Orange/Gariep River. The falls are 56m high. The local name is 'place of big noises.'