



GAUTENG PROVINCE
EDUCATION
REPUBLIC OF SOUTH AFRICA

**GAUTENG DEPARTMENT OF EDUCATION
PROVINCIAL EXAMINATION
JUNE 2017
GRADE 6**

**NATURAL SCIENCES
AND TECHNOLOGY**

MEMORANDUM

6 pages

**GAUTENG DEPARTMENT OF EDUCATION
PROVINCIAL EXAMINATION**

NATURAL SCIENCES AND TECHNOLOGY

MEMORANDUM

SECTION A

QUESTION 1

- | | | |
|-----|---|------------|
| 1.1 | B | (1) |
| 1.2 | D | (1) |
| 1.3 | C | (1) |
| 1.4 | A | (1) |
| 1.5 | C | (1) |
| | | (5) |

QUESTION 2

- | | | |
|-----|-------|------------|
| 2.1 | TRUE | (1) |
| 2.2 | TRUE | (1) |
| 2.3 | FALSE | (1) |
| 2.4 | FALSE | (1) |
| 2.5 | TRUE | (1) |
| | | (5) |

QUESTION 3

- | | | |
|-----|---|------------|
| 3.1 | D | (1) |
| 3.2 | C | (1) |
| 3.3 | E | (1) |
| 3.4 | A | (1) |
| 3.5 | F | (1) |
| | | (5) |

QUESTION 4

- | | | |
|-----|-----------------|------------|
| 4.1 | Scurvy | (1) |
| 4.2 | Habitat | (1) |
| 4.3 | Wetlands | (1) |
| 4.4 | Crystallisation | (1) |
| 4.5 | Insoluble | (1) |
| | | (5) |

QUESTION 5

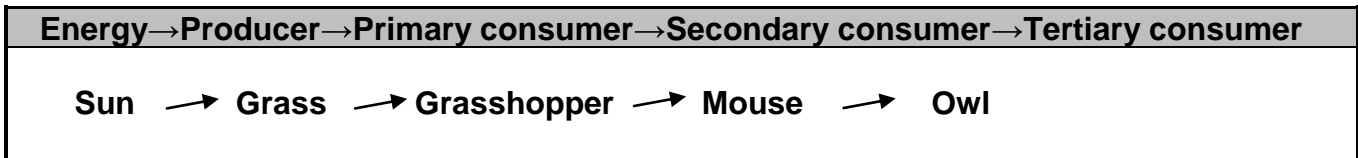
- | | | | |
|-----|-------|----------------|------------|
| 5.1 | 5.1.1 | Sugar | (1) |
| | 5.1.2 | Water | (1) |
| | 5.1.3 | Sugar solution | (1) |
| 5.2 | | Water | (1) |
| 5.3 | | Sugar | (1) |
| | | | (5) |

TOTAL SECTION A: 25

SECTION B

QUESTION 6

6.1 Draw and arrange living and non-living things to show how they depend on each other (food chain).

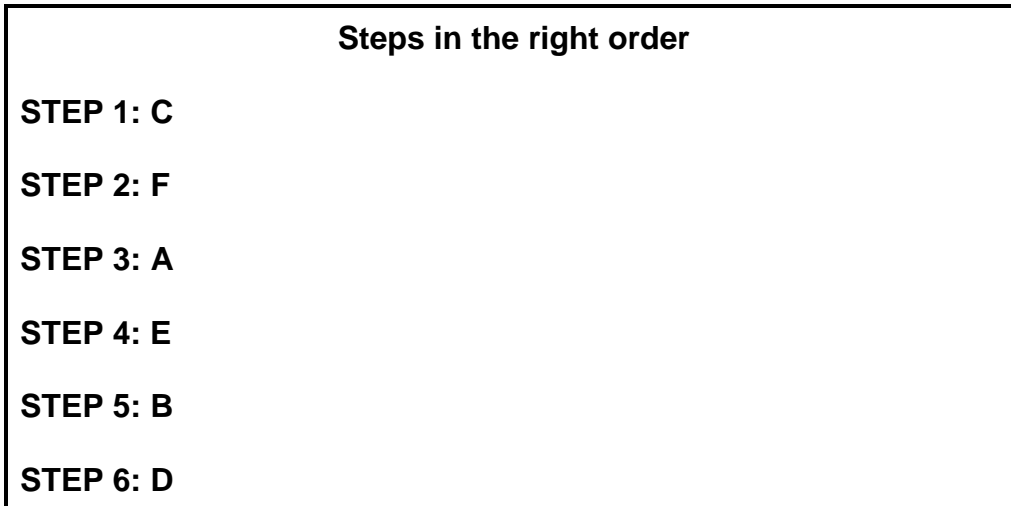


- **Allocate one mark (1) from each component that make up a food chain. (5)**

6.2 Consumers may starve and die (2)

6.3 Owl (1)

6.4 Steps on how Municipal water is cleaned before we use it (6)
(14)



QUESTION 7

7.1 COMPARING PARTICLES IN SOLIDS, LIQUIDS AND GASES

CHARACTERISTICS OF PARTICLES	ARRANGEMENT OF PARTICLES	MOVEMENT
SOLID	7.1 Particles are closely packed together (1)	7.3 Particles do not move around (1)
LIQUID	Particles are closely packed together but further apart than in solids	7.4 Particles can move freely and past each other (1)
GAS	7.2 Particles are far apart from one another (1)	Particles can move in all directions

(4)

TOTAL SECTION B: 18

SECTION C

QUESTION 8

EVALUATING AND ANALYSING

8.1 Any one answer from below.

- Making food edible
- Preserving food/makes food last longer
- Improving nutrient value (1)

8.2 8.2.1 Tomatoes (1)

8.2.2 Has less fats (1)

8.2.3 Butter beans (1)

8.2.4 Has lots of fibre that may assist digestion (1)

8.2.5 Butter beans (1)

8.2.6 Has more energy and more carbohydrates (1)
(7)

TOTAL SECTION C: 7

TOTAL: 50