



**TOM NEWBY SCHOOL**  
**JUNE TEST 2021**



<b>Subject</b>	<b>NATURAL SCIENCES</b>	<b>Examiner</b>	<b>MS COPPENHAGEN</b>
<b>Date</b>	<b>JUNE 2021</b>	<b>Total marks</b>	<b>80</b>
<b>Grade</b>	<b>7</b>	<b>Duration</b>	<b>1 ½ HOUR</b>
		<b>Moderator</b>	<b>MRS FOURIE</b>
<b>Special instructions/ Equipment</b>	<b>1. Answer all the questions on the answer sheet provided.</b> <b>2. Read and answer ALL questions thoroughly.</b> <b>3. Write neatly and legibly in blue pen.</b> <b>4. Use a pencil for any drawings.</b> <b>5. Good luck! Think before you INK!</b>		
This assessment has been compiled using notes and information contained in the Tom Newby School resource material. The marking memorandum has been compiled accordingly. While alternative responses will be given due acknowledgement, the official memorandum will be considered a priority document to ensure uniformity of marking.			
<b>Name:</b>	<b>Surname:</b>	<b>Class:</b>	

**SECTION A: LIFE AND LIVING**

**DEFINITIONS**

**[15]**

**QUESTION 1**

Write a suitable definition for the following words:

1.1 Acids (2)

---

---

1.2 Bases (2)

---

---

1.3 Corrosive (2)

---

---

1.4 Neutral (2)

---

---

## 1.5 Indicators (2)

**QUESTION 2 – MATCH THE COLUMNS**

Match the given information in Column B with the term in Column A. Write the letter of the answer that you have chosen in the answer grid provided. (5)

Column A		Column B	
1.	Flexibility	A.	The process of changing from a liquid to a gas because particles on the surface of the liquid escape into the atmosphere.
2.	Evaporation	B.	The process of changing from a gas to a liquid
3.	Mixture	C.	An impure substance made up of two or more substances.
4.	Condensation	D.	Can be sorted by hand and colour when separating.
5.	Wine-gum sweets & Astro's	E.	Materials that can bend easily without breaking.

**Answer Grid**

1.	2.	3.	4.	5.
_____	_____	_____	_____	_____

**SECTION B: MATTER AND MATERIALS [25]****QUESTION 3**

**3.1 For each object, give a reason why the material used is not suitable.**

3.1.1 plastic car wheels: \_\_\_\_\_ (1)

3.1.2 glass knife: \_\_\_\_\_ (1)

3.1.3 wire mesh bucket: \_\_\_\_\_ (1)

3.1.4 iron roads: \_\_\_\_\_ (1)

3.1.5 wooden netball ball: \_\_\_\_\_ (1)

**3.2 Answer the following questions on mixtures/methods of physical separation.**

3.2.1 At what temperature does ice melt and water boil, in Johannesburg?

\_\_\_\_\_  
\_\_\_\_\_ (2)

3.2.2 Name 6 methods of physical separation and explain or describe any two of the separations. (10)

\_\_\_\_\_  
\_\_\_\_\_  
\_\_\_\_\_  
\_\_\_\_\_  
\_\_\_\_\_  
\_\_\_\_\_  
\_\_\_\_\_  
\_\_\_\_\_  
\_\_\_\_\_  
\_\_\_\_\_

3.2.3 Describe the term solution.

\_\_\_\_\_  
\_\_\_\_\_ (2)

3.2.4 What is the purpose of the cold water around the Liebig Condenser?

\_\_\_\_\_  
\_\_\_\_\_ (2)

3.2.5 Explain what chromatography is and give an example of chromatography. Explain the method where black ink that is in a pen contains more than one pigment and how the colours separate (Think back of the video shown in class).

\_\_\_\_\_  
\_\_\_\_\_  
\_\_\_\_\_  
\_\_\_\_\_  
\_\_\_\_\_  
\_\_\_\_\_ (4)

**SECTION C – ACIDS, BASES AND NEUTRALS [15]**

**QUESTION 4**

4.1 Arrange the following substances into the correct columns. The first one is an example and has been done for you.

**Water, vinegar, washing powder, sugar, salt, bleach, lemon juice, toothpaste**

ACID	BASE	NEUTRAL
		Water

(7)

4.2 What type of acid is found in the human stomach?

(1)

4.3 What is the above-mentioned acid good for and why is it not corrosive to the human body?

(2)

**QUESTION 5**

Look at the image and answer the questions that follow.



5.1 Name the product that contains the alkaline?

(1)

5.2 What is the function of the PH scale?

(2)

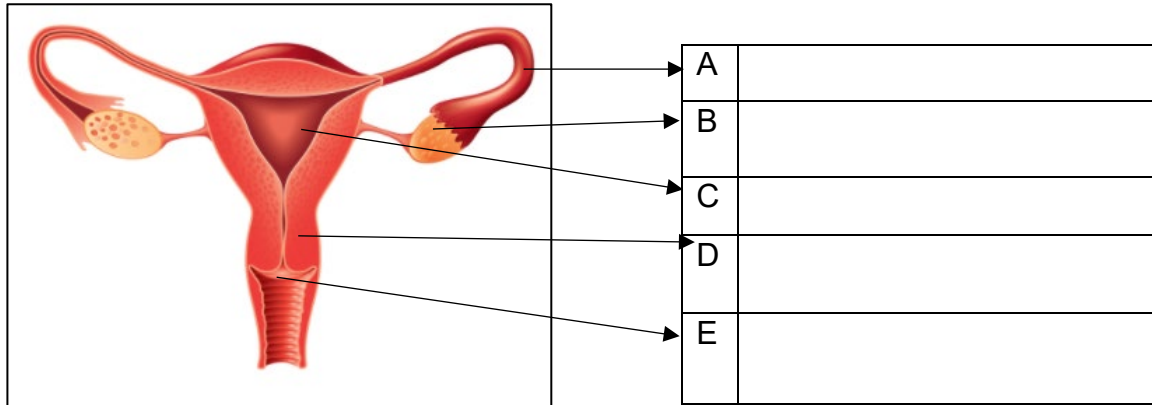


6.3 Explain why a pregnant woman should eat a healthy diet and not take drugs or drink alcohol.

\_\_\_\_\_ (2)

6.4 Name the following labels of the female reproductive organ.

(5)



6.5 Give the name of each of the following:

6.5.1 The organ that releases egg cells.

\_\_\_\_\_ (1)

6.5.2 The organ that produces sperm cells.

\_\_\_\_\_ (1)

6.5.3 The tube that carries the egg to the uterus.

\_\_\_\_\_ (1)

**GRAND TOTAL: [80]**

**TOM NEWBY SCHOOL**  
**GRADE 7- NATURAL SCIENCE – PERFORMANCE ANALYSIS**  
**( For Teacher use only)**

<b>Name:</b>	<b>Surname:</b>	<b>Class: 7</b>
--------------	-----------------	-----------------

QUESTIONS	MARK ALLOCATION	LEARNER'S MARK
<b>SECTION A</b>	<b>[15]</b>	
QUESTION 1	10	
QUESTION 2	5	

<b>SECTION B</b>	<b>[25]</b>	
QUESTION 3	25	

<b>SECTION C</b>	<b>[15]</b>	
QUESTION 4	10	
QUESTION 5	5	

<b>SECTION D</b>	<b>[25]</b>	
QUESTION 6	25	

<b>TOTAL</b>	<b>[80]</b>	
--------------	-------------	--