



SA EXAM PAPERS

YOUR LEADING PAST YEAR EXAM PAPER
PORTAL

Visit SA Exam Papers

www.saexampapers.co.za



basic education

Department:
Basic Education
REPUBLIC OF SOUTH AFRICA

**NATIONAL
SENIOR CERTIFICATE**

GRADE 12

MATHEMATICAL LITERACY P2

ADDENDUM

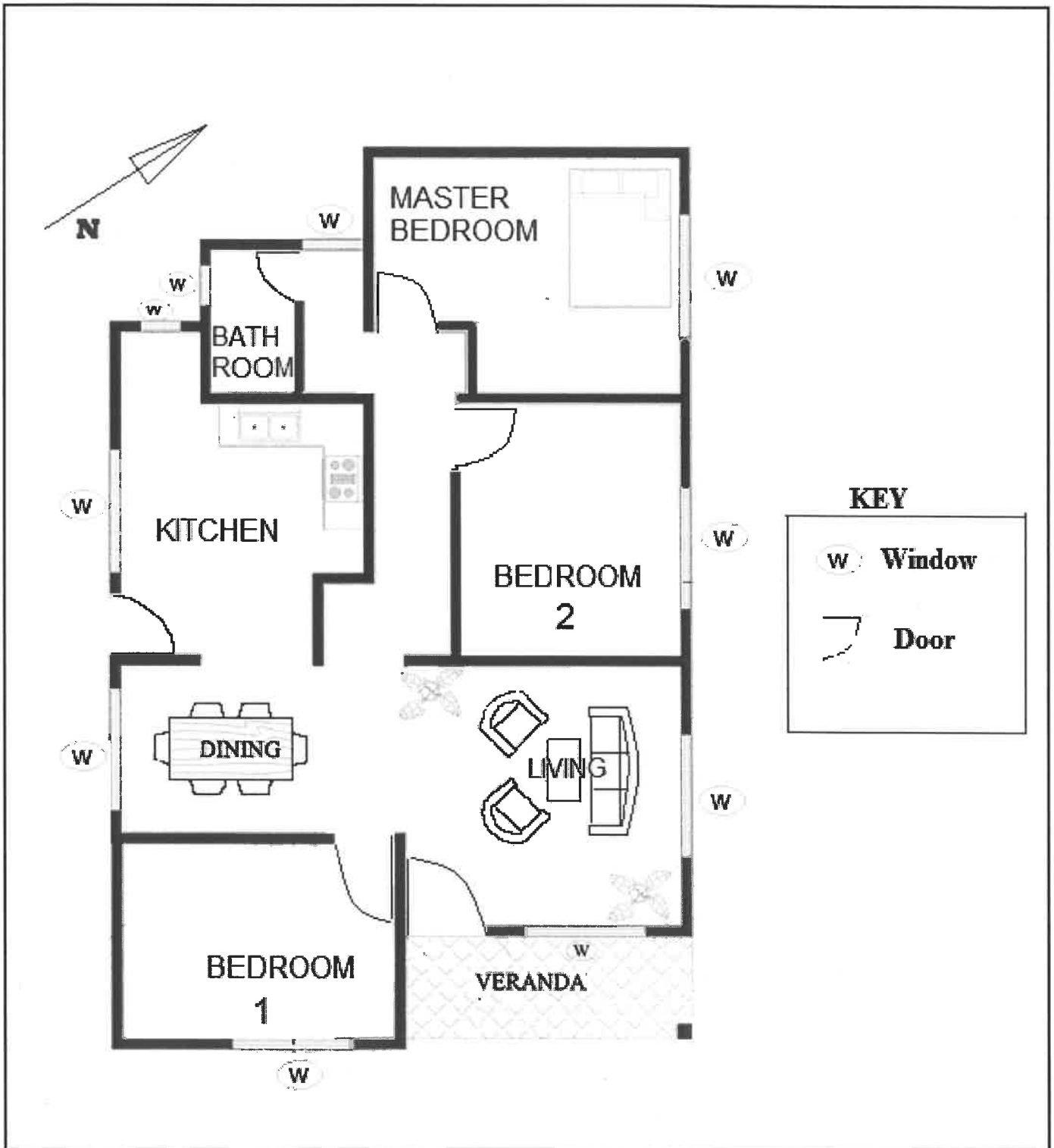
NOVEMBER 2021

This addendum consists of 5 pages with 4 annexures.

ANNEXURE A

QUESTION 2

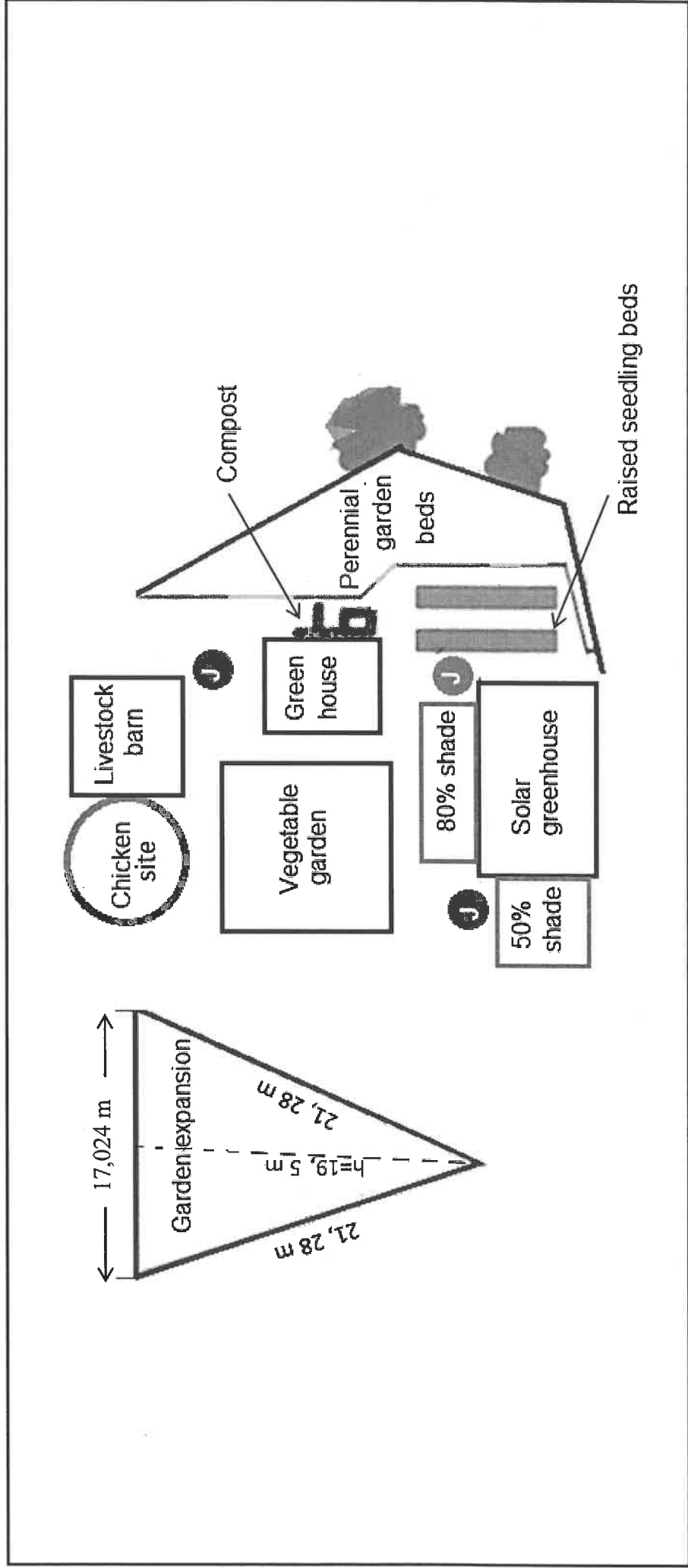
FLOOR PLAN OF A HOUSE



ANNEXURE B

QUESTION 4.1


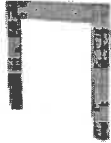

LAYOUT PLAN OF THE FARMYARD



ANNEXURE C

QUESTION 4.3.3

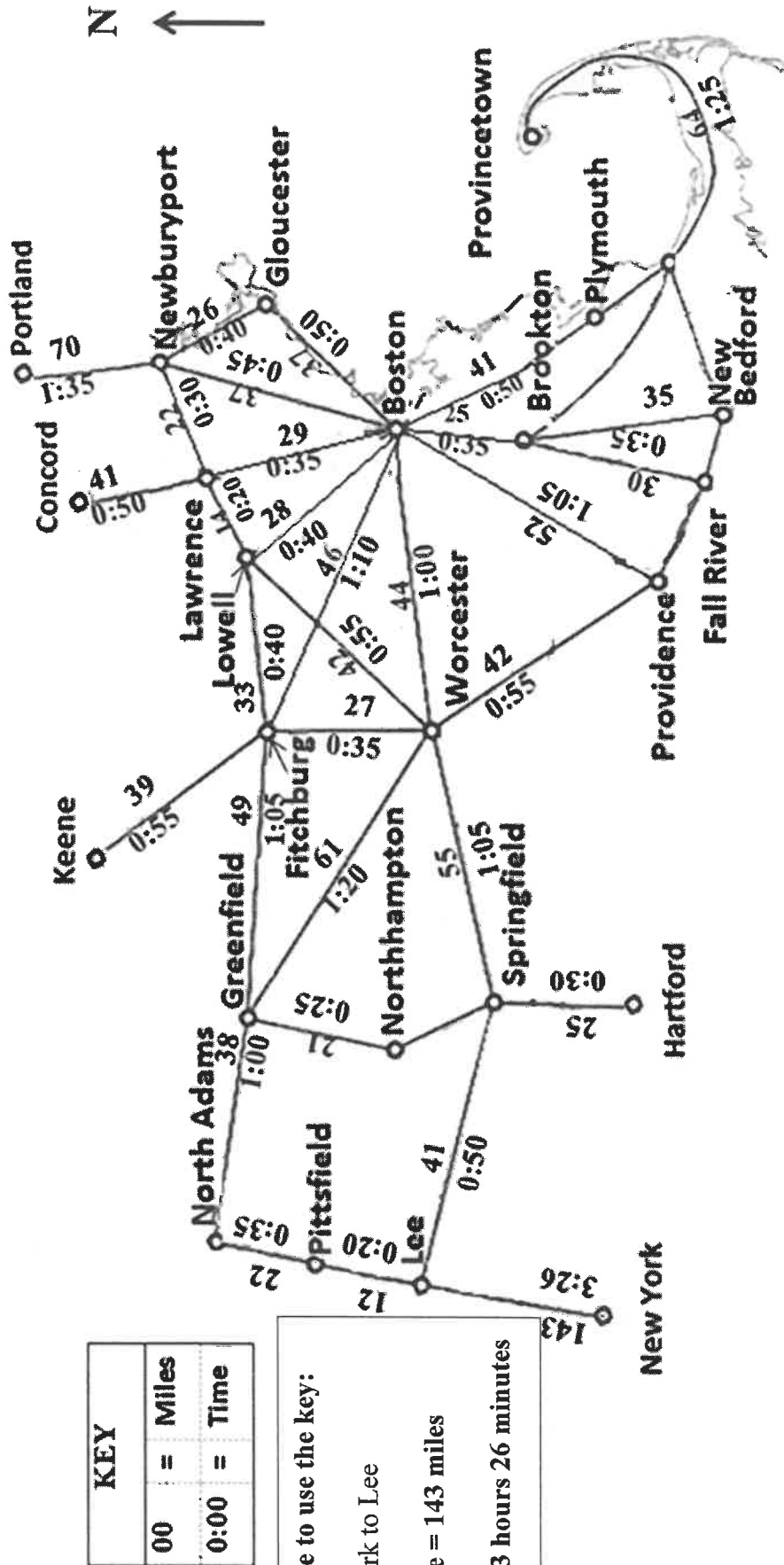
DIAGRAMS AND SOME ASSEMBLY INSTRUCTIONS FOR THE CHAIR

COLUMN A	COLUMN B
(a) 	(i) Attach to the stretcher to the front legs as shown, using glue and screws.
(b) 	(ii) Attach the front legs to the back legs with the stretchers.
(c) 	(iii) Secure the back slats using glue and screws. Position the back stretcher on the legs as shown, then secure using glue and screws.

ANNEXURE D

QUESTION 5.1

PARTIAL MAP OF THE UNITED STATES OF AMERICA SHOWING DISTANCES (IN MILES) AND TIME (IN HOURS AND MINUTES) TAKEN BETWEEN VARIOUS CITIES



KEY	
00	= Miles
0:00	= Time

Example to use the key:
 New York to Lee
 Distance = 143 miles
 Time = 3 hours 26 minutes

[Source: Afp-cv.blogspot.com]